

Bolted Storage Silos for Bulk Solids

SPG 35



Bolted Storage Silos for Bulk Solids SPG 35

THE IDEAL SOLUTION FOR BULK SOLIDS STORAGE

SPG 35 is a range of 3,500mm-diameter silos made up of modular segments for on-site assembly. Designed for economic shipping, SPG 35 silos require short assembly time and minimum maintenance ensuring significant cost reduction.

The design of the SPG 35 series complies with all relevant regulations in force regarding safe storage of any type of powdery or granular material used in storage and processing plants.

The silos are designed and engineered according to the standards in force related to wind, snow, and seismic risk areas zone 1 (0.40g) and zone 2 (0.25g). Packing is designed to minimise shipping costs.

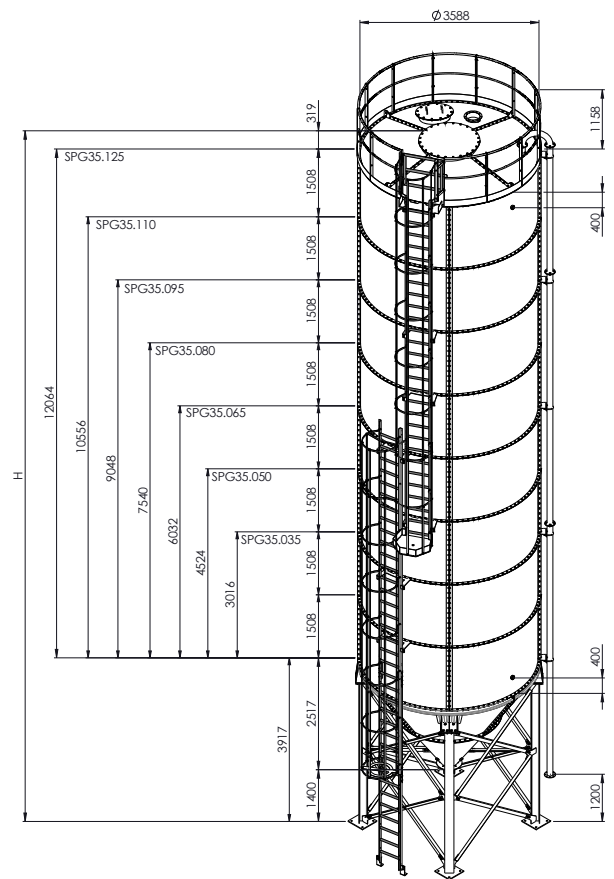
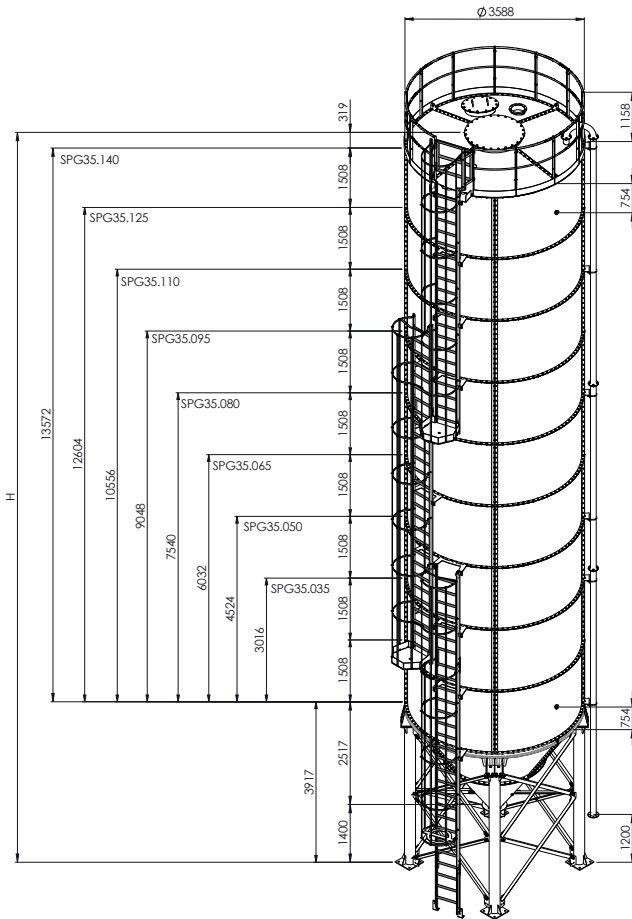
Overall Dimensions

ZS1

Seismic Zone 1 Silos for high seismic risk areas.
Featuring increased thickness (0.40g) and round pipe legs.

ZS2

Seismic Zone 2 Silos for low seismic risk areas.
Featuring standard thickness (0.25g) and HEA profile legs.



| TYPE | Silo Capacity (m³) | Ferulles (qty.) | Panel (qty.) | Total Height (mm) | Net weight (kg) | |
|-----------|--------------------|-----------------|--------------|-------------------|--------------------------|--------------------------|
| | | | | | SEISMIC ZONE ZS1 (0.40g) | SEISMIC ZONE ZS2 (0.25g) |
| SPG35.020 | 20 | 1 | 4 | 5744 | 3,907 | 3,049 |
| SPG35.035 | 35 | 2 | 8 | 7252 | 4,608 | 3,540 |
| SPG35.050 | 50 | 3 | 12 | 8760 | 5,425 | 4,040 |
| SPG35.065 | 65 | 4 | 16 | 10268 | 6,194 | 4,672 |
| SPG35.080 | 80 | 5 | 20 | 11776 | 7,021 | 5,225 |
| SPG35.095 | 95 | 6 | 24 | 13284 | 7,720 | 5,944 |
| SPG35.110 | 110 | 7 | 28 | 14792 | 9,065 | 6,631 |
| SPG35.125 | 125 | 8 | 32 | 16300 | 9,757 | 7,181 |
| SPG35.140 | 140 | 9 | 36 | 17808 | 11,497 | not available |

Benefits

- ✓ Pre-equipped for several types of venting filters, outlet valves, cone aeration systems, level and pressure monitoring devices.
- ✓ Packing designed to minimise shipping costs.
- ✓ Modular system that simplifies shipping, installation and dismantling.
- ✓ Large number of items available from stock.

Features



Silos designed and engineered in compliance with the standards in force related to wind, snow, and seismic activities.



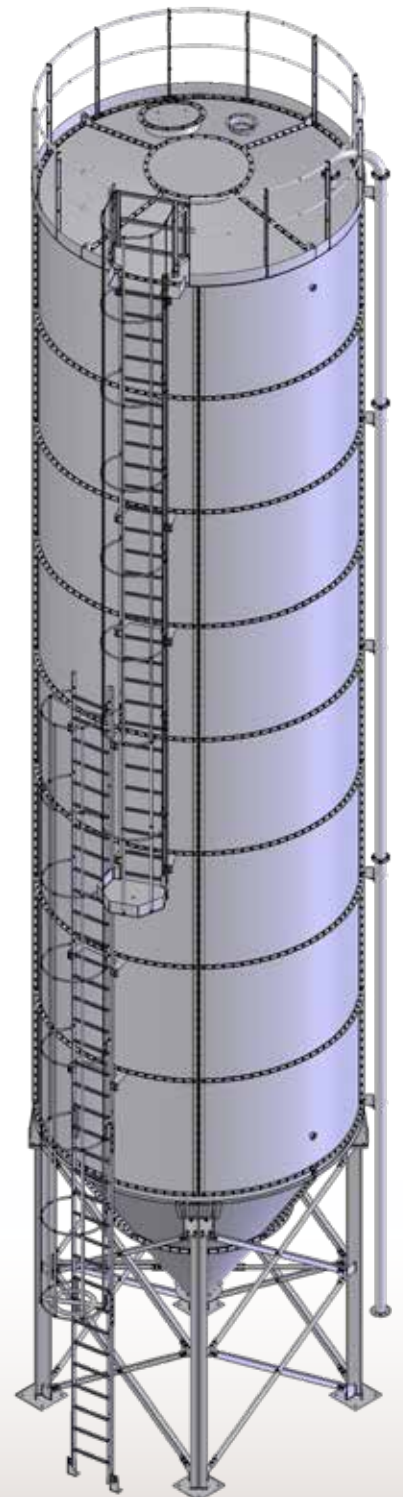
Large variety of application layouts; supervising during assembly through global WAMGROUP® network.



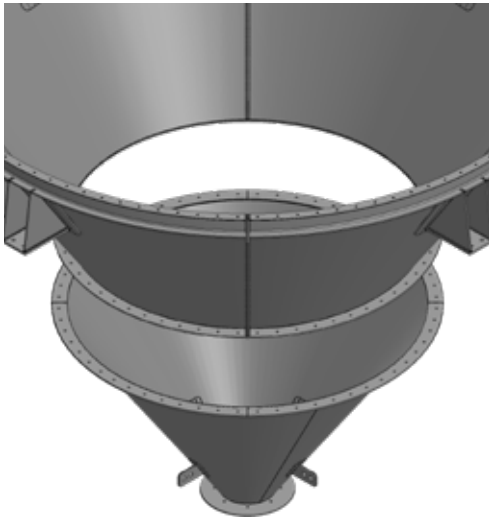
Carefully selected materials and industrial manufacturing processes resulting in a high-quality product in the tradition of artisan expertise.



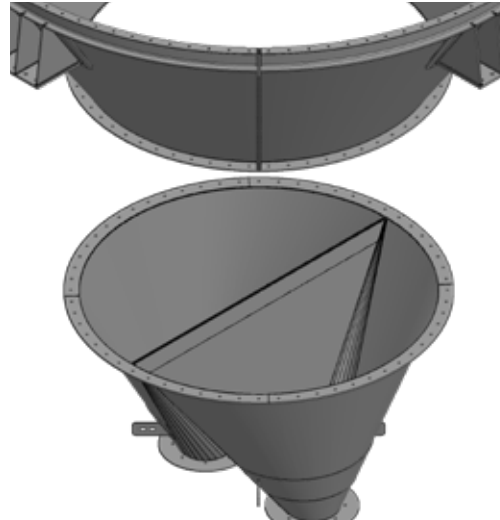
Certified products provided with all necessary technical documentation.



Bottom Cone Options and Aeration



Standard 56° bottom cone

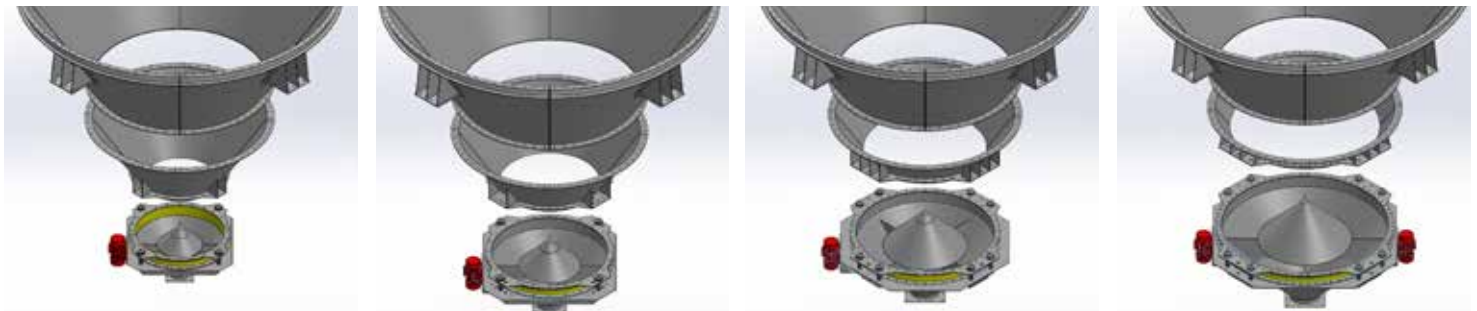


Twin outlet cone

| OLI® PRODUCT | CODE | HOLES qty. | Ø mm |
|--------------|------|------------|------|
| | F04 | 4 | 14 |
| | F08 | 8 | 14 |
| | F12 | 12 | 14 |
| | V04 | 4 | 23 |
| | V08 | 8 | 23 |
| | V12 | 12 | 23 |

| OLI® PRODUCT | CODE | BOSSES qty. | Dimension in |
|--------------|------|-------------|---------------|
| | M04 | 4 | 2" with plugs |
| | M08 | 8 | 2" with plugs |
| | M12 | 12 | 2" with plugs |
| | S04 | 4 | 1" with plugs |
| | S06 | 6 | 1" with plugs |
| | S08 | 8 | 1" with plugs |
| | S12 | 12 | 1" with plugs |

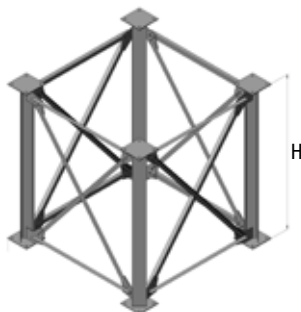
Bin Activator Pre-arrangement



EXTRAC® BA 100 pre-arrangement EXTRAC® BA 125 pre-arrangement EXTRAC® BA 150 pre-arrangement EXTRAC® BA 180 pre-arrangement

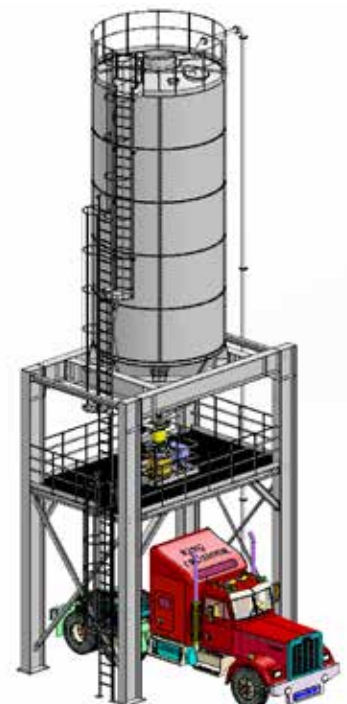
Support Frames

All support frames are suitable for seismic zone 1 (0.40g) and 2 (0.25g)



Truck Loading Platforms

SILOFAB™ supplies truck loading platforms for single silos as well as battery configurations.



| CODE | | Distance from outlet to ground (mm) | Frame height (mm) | MODULE | | |
|--------------------------|-----------------------|-------------------------------------|-------------------|----------------|----------------|----------------|
| without service platform | with service platform | | | H = 1,710 (mm) | H = 2,280 (mm) | H = 2,280 (mm) |
| STS1S | STP1S | 3,110 | 1,710 | X | | |
| STS2S | STP2S | 3,680 | 2,280 | | X | |
| STS3S | STP3S | 4,250 | 2,850 | | | X |
| STS4S | STP4S | 4,820 | 3,420 | XX | | |
| STS5S | STP5S | 5,960 | 4,560 | | XX | |
| STS6S | STP6S | 7,100 | 5,700 | | | XX |
| STS7S | STP7S | 5,390 | 3,990 | X | X | |
| STS8S | STP8S | 5,960 | 4,560 | X | | X |
| STS9S | STP9S | 6,530 | 5,130 | | X | X |

Application



INDUSTRIES

- Concrete Production
- DryMix Building Materials
- Asphalt Plants
- Sludge Treatment
- Foundries
- Glass Processing
- Paint Production
- Flour Milling
- Rice Milling
- Lime & Gypsum Processing
- Refractory Processing
- Brick & Roof Tile Production
- Ceramics Production

Quality



9001:2015

Quality Management Systems



Environmental Management Systems



ISO 45001:2018

Occupational Health And Safety Management Systems



Quality Management Customer Satisfaction



Execution of Steel Structures and Aluminium Structures



Quality Requirements for Fusion Welding of Metallic Materials

Robotic Welding Station







Welding







- Welding coordination personnel - International Welding Engineer (IWE & EWE)
- NDT personnel certified according to ISO 9712
- Welders certified according to ISO 9606-1
- WPS supported by WPQR available at workstations

Shipping Space Calculation

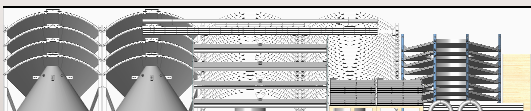
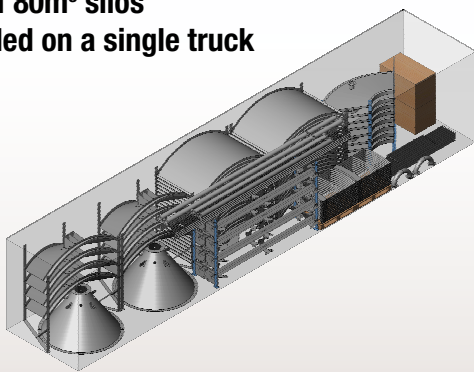
Space calculation for seismic zone 1 (0.40g) bolted silos

| SILO TYPE | TRANSPORT REQUIREMENTS FOR 1 SILO | | TRANSPORT REQUIREMENTS FOR 2 SILOS | |
|-----------|--|--|--|--|
| | Road Transportation  L 13.6 X 2.45 X 2.70 | Maritime Transportation  Open Top Container | Road Transportation  L 13.6 X 2.45 X 2.70 | Maritime Transportation  Open Top Container |
| SPG35.020 | 7.0 m | 1 x 40" OT | 11.0 m | 1 x 40" OT + 1 x 20" OT |
| SPG35.035 | 8.5 m | 1 x 40" OT | 11.0 m | 1 x 40" OT + 1 x 20" OT |
| SPG35.050 | 8.5 m | 1 x 40" OT | 12.0 m | 1 x 40" OT + 1 x 20" OT |
| SPG35.065 | 8.5 m | 1 x 40" OT | 1 truck | 1 x 40" OT + 1 x 20" OT |
| SPG35.080 | 8.5 m | 1 x 40" OT | 1 truck | 2 x 40" OT |
| SPG35.095 | 11.0 m | 1 x 40" OT + 1 x 20" OT | 1 Truck + 3 m | 2 x 40" OT |
| SPG35.110 | 11.0 m | 1 x 40" OT + 1 x 20" OT | 1 Truck + 3 m | 2 x 40" OT |
| SPG35.125 | 11.0 m | 1 x 40" OT + 1 x 20" OT | 1 Truck + 6 m | 2 x 40" OT |
| SPG35.140 | 11.0 m | 1 x 40" OT + 1 x 20" OT | 1 Truck + 6 m | 2 x 40" OT |

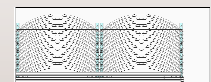
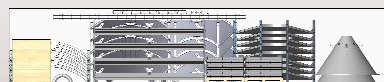
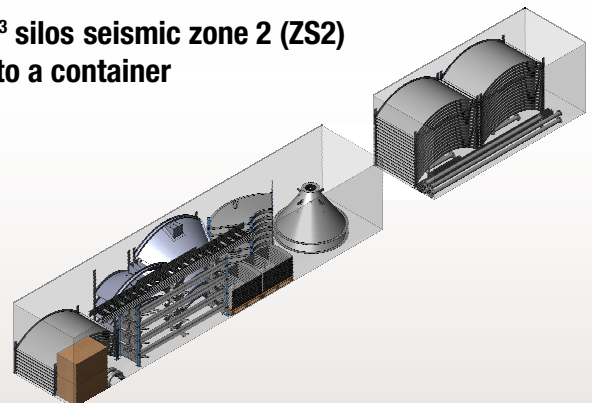
Space calculation for seismic zone 2 (0.25g) bolted silos

| SILO TYPE | TRANSPORT REQUIREMENTS FOR 1 SILO | | TRANSPORT REQUIREMENTS FOR 2 SILOS | |
|-----------|--|--|--|--|
| | Road Transportation  L 13.6 X 2.45 X 2.70 | Maritime Transportation  Open Top Container | Road Transportation  L 13.6 X 2.45 X 2.70 | Maritime Transportation  Open Top Container |
| SPG35.020 | 7.0 m | 1 x 40" OT | 11.0 m | 1 x 40" OT |
| SPG35.035 | 8.5 m | 1 x 40" OT | 11.0 m | 1 x 40" OT |
| SPG35.050 | 8.5 m | 1 x 40" OT | 12.0 m | 1 x 40" OT + 1 x 20" OT |
| SPG35.065 | 8.5 m | 1 x 40" OT | 1 truck | 1 x 40" OT + 1 x 20" OT |
| SPG35.080 | 8.5 m | 1 x 40" OT | 1 truck | 1 x 40" OT + 1 x 20" OT |
| SPG35.095 | 11.0 m | 1 x 40" OT | 1 Truck + 3 m | 2 x 40" OT |
| SPG35.110 | 11.0 m | 1 x 40" OT | 1 Truck + 3 m | 2 x 40" OT |
| SPG35.125 | 11.0 m | 1 x 40" OT + 1 x 20" OT | 1 Truck + 6 m | 2 x 40" OT |

2 off 80m³ silos loaded on a single truck



2 off 80m³ silos seismic zone 2 (ZS2) loaded into a container



Application



SILOFAB™ Standard External Colour Selection

| | | | | | | |
|----------|----------|----------|----------|----------|----------|----------|
| RAL 7035 | RAL 1013 | RAL 2009 | RAL 5010 | RAL 5012 | RAL 6011 | RAL 7001 |
| RAL 7032 | RAL 7044 | RAL 9001 | RAL 9002 | RAL 9003 | RAL 9010 | |



203001797 September 2020 Rights reserved to modify technical specifications.

This brochure has been edited for distribution in European Union countries



SILOFAB



www.silofab.com